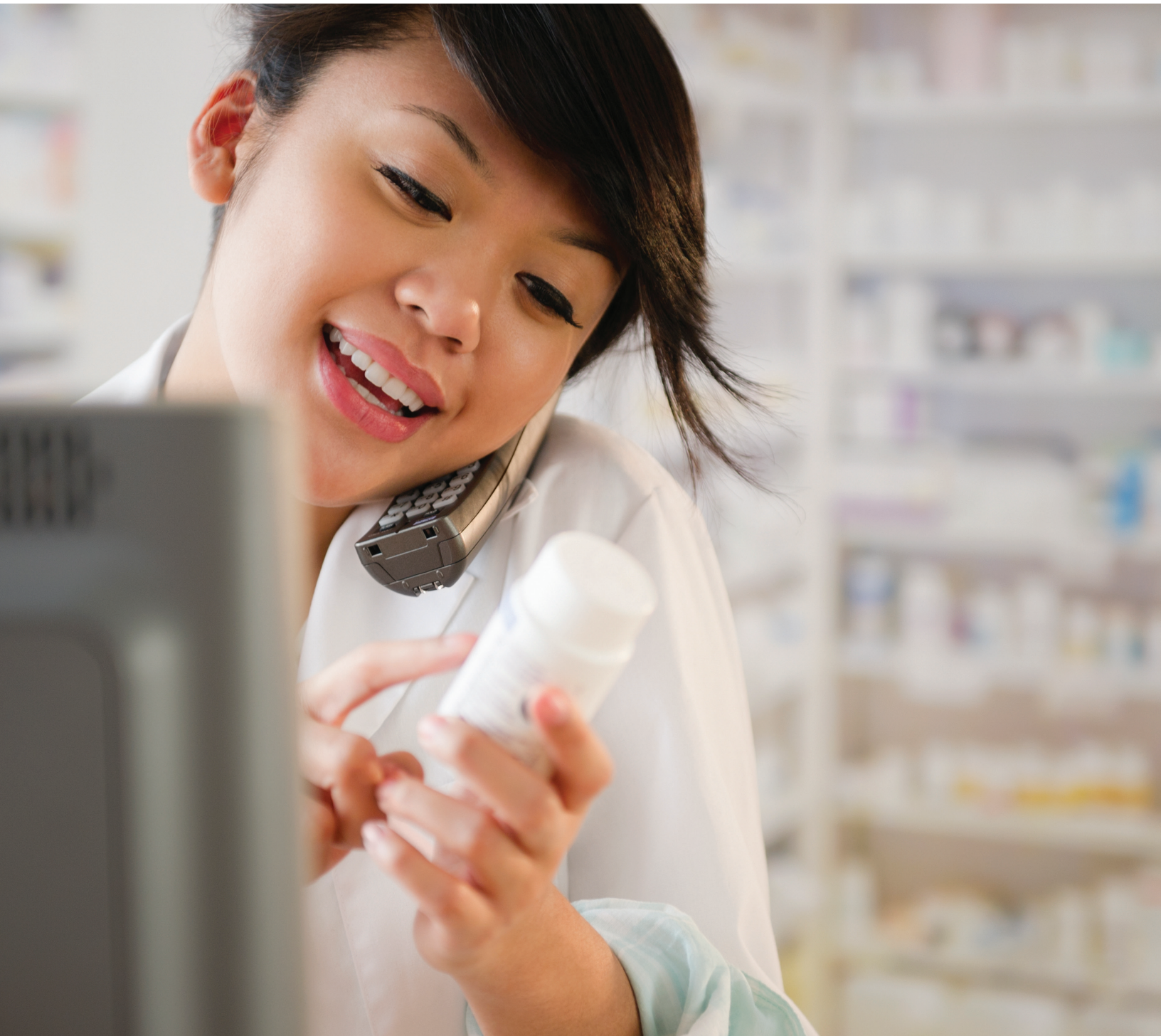




BlueCross BlueShield
of Texas



Preventive Drug Benefit Program

Employee Guide

Effective January 1, 2026

Blue Cross and Blue Shield of Texas, a Division of Health Care Service Corporation,
a Mutual Legal Reserve Company, an Independent Licensee of the Blue Cross and Blue Shield Association

Preventive Drug Benefit Program for The County of Galveston

Introduction

Blue Cross and Blue Shield of Texas administers the preventive drug benefit for your group's high deductible health plan, which has been designed for use with Health Savings Accounts. The preventive drug benefit program includes categories of prescription drugs that are often used for preventive purposes. If your doctor has prescribed any of them to you or to your HDHP-covered dependents for preventive purposes, your HDHP may pay for the drugs before you meet your HDHP deductible.

This guide is being provided as a resource to help you manage your prescription drug benefits under your employer's HDHP. It includes some commonly, but not all, drugs that are prescribed for preventive purposes.

The drugs listed in this guide will be reviewed from time to time and are subject to change. Coverage of all medications is still subject to your HDHP limits, exclusions and out-of-pocket requirements (for example, your prescription drug payment levels). Coverage of some medications or drug products may be under your medical benefit. Please verify with your benefit plan if there are any additional requirements before a drug may be covered.

IMPORTANT REMINDER: These drugs could also at times be prescribed for treatment purposes. As a result, the listing of a drug in the Guide does not mean that it will be covered by your benefit plan before your HDHP deductible is satisfied. If your doctor has prescribed a listed drug for treatment purposes (and not preventive purposes) then your plan does not provide coverage for that drug before your HDHP deductible is satisfied.

As each individual's medical circumstances are different, and because proper classification is necessary for you to ensure you are complying with applicable HDHP tax requirements, it is important for you to confirm the purpose of the prescription with your doctor. Please call the number on your member ID card when your doctor confirms for you that they prescribed one of the listed drugs for treatment purposes so your claims can be processed correctly. **Unless you provide us with this information, claims for the drugs listed in the Guide will be processed as "preventive," and you or your doctor may be asked by us to provide medical records showing that the drug you're taking is being used for prevention. Remember, if you improperly classify the drug, it may result in adverse tax consequences so please be sure to take the confirming step to properly classify your claim.**

Please follow these steps to make sure you are properly classifying the purpose of your prescription:

1. Find your drug in the Guide.
2. Talk to your doctor about whether your drug is in fact being prescribed for preventive purposes (and not treatment purposes).
3. If prescribed for treatment purposes, call the number on your ID card to let us know.
4. If prescribed for preventive purposes, there is no need to call.

2026 HDHP-HSA Preventive Drug List for The County of Galveston

The preventive drug program currently includes prescription drugs in the following categories:

- Antianginal
- Anti-coagulants / anti-platelets
- Anticonvulsants
- Anti-malarials
- Antipsychotics
- Bowel prep medications
- Contraceptives
- Depression
- Diabetes medications
- Diabetic supplies
- Estrogen
- Gastrointestinal ulcer
- Gout
- High blood pressure
- High cholesterol orals
- Influenza agents
- Mental health
- Osteoporosis
- Respiratory
- Thyroid agents

The drugs in each category are listed alphabetically on the following pages.

- Generic drugs are listed in **bold**.
- Brand drugs are listed in all CAPITAL letters.
- Some strengths and/or formulations may not be covered.
- Brand names in parenthesis are listed for reference and are not covered under the benefit.



This drug/drug category may also be included under the Affordable Care Act coverage of preventive services. These products have limited or \$0 member cost-sharing (copay or co-insurance), when meeting the conditions as outlined under the regulation and when you use a pharmacy or doctor in your health plan's network. Not all products covered under the ACA are shown. Coverage can vary based on your benefit plan and/or prescription drug list. Call the number on your member ID card if you have any questions and to find out what you may pay.

REMEMBER: Just because a drug is on the preventive drug benefit list, doesn't always mean it is covered. It also doesn't mean that it may be covered by your benefit plan before your HDHP deductible is satisfied. Coverage of all medications is still subject to your plan benefits. Please see your benefit plan materials for coverage details, or call the number on your member ID card.

Health Savings Accounts have tax and legal ramifications. Blue Cross and Blue Shield of Texas does not provide legal or tax advice, and nothing herein should be construed as legal or tax advice. These materials, and any tax-related statements in them, are not intended or written to be used, and cannot be used or relied on, for the purpose of avoiding tax penalties. Tax-related statements, if any, may have been written in connection with the promotion or marketing of the transaction(s) or matter(s) addressed by these materials. You should seek advice based on your particular circumstances from an independent tax advisor regarding the tax consequences of specific health insurance plans or products.

2026 HDHP-HSA Preventive Drug List for The County of Galveston

Antianginal

isosorbide dinitrate tab 5 mg, (Isordil Titradoso)
isosorbide dinitrate tab 10 mg, 20 mg, 30 mg
isosorbide mononitrate tab er 24hr 30 mg, 60 mg, 120 mg
nitroglycerin sl tab 0.3 mg, 0.4 mg, 0.6 mg (Nitrostat)
nitroglycerin td patch 24hr 0.1 mg/hr, 0.2 mg/hr, 0.4 mg/hr, 0.6 mg/hr (Nitro-Dur)
nitroglycerin tl soln 0.4 mg/spray (400 mcg/spray) (Nitrolingual)
ranolazine tab er 12 hr 500 mg, 1000 mg

Anti-Coagulants / Anti-Platelets

anagrelide hcl cap 0.5 mg (Agrylin)
anagrelide hcl cap 1 mg
aspirin-dipyridamole cap er 12hr 25-200 mg
cilostazol tab 50 mg, 100 mg
clopidogrel bisulfate tab 75 mg (base equivalent) (Plavix)
dabigatran etexilate mesylate cap 75 mg, 110 mg, 150 mg (etexilate base eq) (Pradaxa)
dipyridamole tab 25 mg, 50 mg, 75 mg
prasugrel hcl tab 5 mg, 10 mg (base equiv) (Effient)
rivaroxaban tab 2.5 mg (Xarelto)
ticagrelor tab 60 mg, 90 mg (Brilinta)
warfarin sodium tab 1 mg, 2 mg, 2.5 mg, 3 mg, 4 mg, 5 mg, 6 mg, 7.5 mg, 10 mg

Anticonvulsants

carbamazepine cap er 12hr 100 mg, 200 mg, 300 mg (Carbatrol)
carbamazepine chew tab 100 mg

carbamazepine susp 100 mg/5 mL (Tegretol)
carbamazepine tab 200 mg (Tegretol)
carbamazepine tab er 12hr 100 mg, 200 mg, 400 mg (Tegretol-XR)
DILANTIN – phenytoin sodium extended cap 30 mg
divalproex sodium cap delayed release sprinkle 125 mg (Depakote Sprinkles)
divalproex sodium tab delayed release 125 mg, 250 mg, 500 mg (Depakote)
divalproex sodium tab er 24hr 250 mg, 500 mg (Depakote ER)
EPIDIOLEX – cannabidiol soln 100 mg/mL
eslicarbazepine acetate tab 200 mg, 400 mg, 600 mg, 800 mg (Aptiom)
ethosuximide cap 250 mg (Zarontin)
ethosuximide soln 250 mg/5 mL (Zarontin)
felbamate susp 600 mg/5 mL
felbamate tab 400 mg, 600 mg (Felbatol)
lacosamide oral solution 10 mg/mL (Vimpat)
lacosamide tab 50 mg, 100 mg, 150 mg, 200 mg (Vimpat)
lamotrigine tab 25 mg, 100 mg, 150 mg, 200 mg (Lamictal)
lamotrigine tab 25 mg (35) starter kit (Lamictal Starter/Taking Valproate)
lamotrigine tab 25 mg (42) & 100 mg (7) starter kit (Lamictal Starter/Not Taking Carbamazepine)
lamotrigine tab 25 mg (84) & 100 mg (14) starter kit (Lamictal Starter/Taking Carbamazepine/Not Taking Valproate)
lamotrigine tab chewable dispersible 5 mg, 25 mg (Lamictal Chewable Dispersible)

lamotrigine tab er 24hr 25 mg, 50 mg, 100 mg, 200 mg, 250 mg, 300 mg (Lamictal XR)
levetiracetam oral soln 100 mg/mL (Keppra)
levetiracetam tab 250 mg, 500 mg, 750 mg, 1000 mg (Keppra)
levetiracetam tab er 24hr 500 mg, 750 mg (Keppra XR)
methsuximide cap 300 mg (Celontin)
oxcarbazepine susp 300 mg/5 mL (60 mg/mL) (Trileptal)
oxcarbazepine tab 150 mg, 300 mg, 600 mg (Trileptal)
perampanel tab 2 mg, 4 mg, 6 mg, 8 mg, 10 mg, 12 mg (Fycompa)
phenytoin chew tab 50 mg (Dilantin chw)
phenytoin sodium extended cap 100 mg (Dilantin)
phenytoin sodium extended cap 200 mg, 300 mg (Phenytek)
phenytoin susp 125 mg/5 mL (Dilantin-125)
primidone tab 50 mg, 250 mg (Mysoline)
rufinamide susp 40 mg/mL (Banzel)
rufinamide tab 200 mg, 400 mg (Banzel)
tiagabine hcl tab 2 mg, 4 mg, 12 mg, 16 mg
topiramate cap er 24hr 25 mg, 50 mg, 100 mg, 200 mg (Trokendi XR)
topiramate cap er 24hr sprinkle 25 mg, 50 mg, 100 mg, 150 mg 200 mg (Qudexy XR)
topiramate sprinkle cap 15 mg 25 mg (Topamax Sprinkle)
topiramate tab 25 mg, 50 mg, 100 mg, 200 mg (Topamax)
valproate sodium oral soln 250 mg/5 mL (base equivalent)
valproic acid cap 250 mg

2026 HDHP-HSA Preventive Drug List for The County of Galveston

vigabatrin powd pack 500 mg (Sabril)
vigabatrin tab 500 mg (Sabril)
zonisamide cap 25 mg, 100 mg (Zonegran)
zonisamide cap 50 mg

Anti-Malarials

atovaquone-proguanil hcl tab 62.5-25 mg, 250-100 mg (Malarone)
chloroquine phosphate tab 250 mg, 500 mg
hydroxychloroquine sulfate tab 100 mg, 300 mg, 400 mg
hydroxychloroquine sulfate tab 200 mg (Plaquenil)
mefloquine hcl tab 250 mg
primaquine phosphate tab 26.3 mg (15 mg base) (Primaquine)

Antipsychotics

aripiprazole oral solution 1 mg/mL
aripiprazole orally disintegrating tab 10 mg, 15 mg
aripiprazole tab 2 mg, 5 mg, 10 mg, 15 mg, 20 mg, 30 mg (Abilify)
asenapine maleate sl tab 2.5 mg, 5 mg, 10 mg (base equivalent) (Saphris)
chlorpromazine hcl tab 10 mg, 25 mg, 50 mg, 100 mg, 200 mg
clozapine orally disintegrating tab 25 mg, 100 mg, 150 mg, 200 mg
clozapine tab 25 mg, 50 mg, 100 mg, 200 mg (Clozaril)
fluphenazine hcl tab 1 mg, 2.5 mg, 5 mg, 10 mg
haloperidol lactate oral conc 2 mg/mL
haloperidol tab 0.5 mg, 1 mg, 2 mg, 5 mg, 10 mg, 20 mg
lithium carbonate cap 150 mg, 300 mg, 600 mg (Lithium Carbonate)

lithium carbonate tab 300 mg
lithium carbonate tab er 300 mg (Lithobid)
lithium carbonate tab er 450 mg
lithium oral solution 8 meq/5 mL
loxapine succinate cap 5 mg, 10 mg, 25 mg, 50 mg
lurasidone hcl tab 20 mg, 40 mg, 60 mg, 80 mg, 120 mg (Latuda)
olanzapine orally disintegrating tab 5 mg, 10 mg, 15 mg, 20 mg (Zyprexa zydis)
olanzapine tab 2.5 mg, 5 mg, 7.5 mg, 10 mg, 15 mg, 20 mg (Zyprexa)
paliperidone tab er 24hr 1.5 mg
paliperidone tab er 24hr 3 mg, 6 mg, 9 mg (Invega)
perphenazine tab 2 mg, 4 mg, 8 mg, 16 mg
prochlorperazine maleate tab 5 mg, 10 mg (base equivalent)
prochlorperazine suppos 25 mg
quetiapine fumarate tab 25 mg, 50 mg, 100 mg, 200 mg, 300 mg, 400 mg (Seroquel)
quetiapine fumarate tab er 24hr 50 mg, 150 mg, 200 mg, 300 mg, 400 mg (Seroquel xr)
REXULTI – brexpiprazole tab 0.25 mg, 0.5 mg, 1 mg, 2 mg, 3 mg, 4 mg
risperidone orally disintegrating tab 0.5 mg, 1 mg, 2 mg, 3 mg, 4 mg
risperidone soln 1 mg/mL (Risperdal)
risperidone tab 0.25 mg
risperidone tab 0.5 mg, 1 mg, 2 mg, 3 mg, 4 mg (Risperdal)
thiothixene cap 1 mg, 2 mg, 5 mg, 10 mg
trifluoperazine hcl tab 1 mg, 2 mg, 5 mg, 10 mg
VRAYLAR – cariprazine hcl cap 1.5 mg, 3 mg, 4.5 mg, 6 mg (base equivalent)
ziprasidone hcl cap 20 mg, 40 mg, 60 mg, 80 mg (Geodon)

Bowel Prep Medications

peg 3350-kcl-na bicarb-nacl-na sulfate for soln 236 gm (Golytely)
peg 3350-kcl-nacl-na sulfate-na ascorbate-c for soln 100 gm (Moviprep)
peg 3350-kcl-sod bicarb-nacl for soln 420 gm

Contraceptives

Cervical Caps

FEMCAP – cervical cap 22 mm, 26 mm, 30 mm

Diaphragms

CAYA – diaphragm arc-spring
OMNIFLEX DIAPHRAGM – diaphragms
WIDE-SEAL SILICONE DIAPHRAGM KIT – diaphragm wide seal 60 mm, 65 mm, 70 mm, 75 mm, 80 mm, 85 mm, 90 mm, 95 mm

Female Condom

FC2 FEMALE CONDOM condoms – female

Male Condom

ALL MALE CONDOMS

Spermicide

ENCARE – nonoxynol-9 vaginal suppos 100 mg
OPTIONS GYNOL II VAGINAL – nonoxynol-9 gel 3%
VCF VAGINAL CONTRACEPTIVE FILM – nonoxynol-9 film 28%
VCF VAGINAL CONTRACEPTIVE FOAM – nonoxynol-9 foam 12.5%

Sponge

TODAY SPONGE – nonoxynol-9 vaginal sponge 1000 mg

Emergency Progestin

Aftera – levonorgestrel tab 1.5 mg (Plan B One-Step)
Afterpill – levonorgestrel tab 1.5 mg (Plan B One-Step)

2026 HDHP-HSA Preventive Drug List for The County of Galveston

Eontra One Step – levonorgestrel tab 1.5 mg (Plan B One-Step)	Aubra eq – levonorgestrel & ethinyl estradiol tab 0.1 mg-20 mcg	Cyred eq – desogestrel & ethinyl estradiol tab 0.15 mg-30 mcg
Her Style – levonorgestrel tab 1.5 mg (Plan B One-Step)	Aurovela 1/20 – norethindrone ace & ethinyl estradiol tab 1 mg-20 mcg	Dasetta 1/35 – norethindrone & ethinyl estradiol tab 1 mg-35 mcg
levonorgestrel tab 1.5 mg (Plan B One-Step)	Aurovela 1.5/30 – norethindrone ace & ethinyl estradiol tab 1.5 mg-30 mcg	Dasetta 7/7/7 – norethindrone-eth estradiol tab 0.5-35/0.75-35/1-35 mg-mcg
My Choice – levonorgestrel tab 1.5 mg (Plan B One-Step)	Aurovela 24 fe – norethindrone ace-ethinyl estradiol-fe tab 1 mg-20 mcg (24)	Delyla – levonorgestrel & ethinyl estradiol tab 0.1 mg-20 mcg
My Way – levonorgestrel tab 1.5 mg (Plan B One-Step)	Aurovela fe 1/20 – norethindrone ace & ethinyl estradiol-fe tab 1 mg-20 mcg	desogest-eth estrad & eth estrad tab 0.15-0.02/0.01 mg (21/5)
New Day – levonorgestrel tab 1.5 mg (Plan B One-Step)	Aurovela fe 1.5/30 – norethindrone ace & ethinyl estradiol-fe tab 1.5 mg-30 mcg	drosiprenone-ethinyl estrad-levomefolate tab 3-0.02-0.451 mg (Beyaz)
Opcicon One-Step – levonorgestrel tab 1.5 mg (Plan B One-Step)	Averi – desogestrel-ethinyl estradiol-fe tab 0.15-0.03 mg	drosiprenone-ethinyl estradiol tab 3-0.02 mg (Yaz)
Option 2 – levonorgestrel tab 1.5 mg (Plan B One-Step)	Aviane – levonorgestrel & ethinyl estradiol tab 0.1 mg-20 mcg	drosiprenone-ethinyl estradiol tab 3-0.03 mg (Yasmin 28)
React – levonorgestrel tab 1.5 mg (Plan B One-Step)	Ayuna – levonorgestrel & ethinyl estradiol tab 0.15 mg-30 mcg	Elinest – norgestrel & ethinyl estradiol tab 0.3 mg-30 mcg
Take Action – levonorgestrel tab 1.5 mg (Plan B One-Step)	Azurette – desogest-eth estrad & eth estrad tab 0.15-0.02/0.01 mg (21/5)	Enpresse-28 – levonorgestrel-eth estra tab 0.05-30/0.075-40/0.125-30 mg-mcg
Emergency Ella	Balziva – norethindrone & ethinyl estradiol tab 0.4 mg-35 mcg	Enskyce – desogestrel & ethinyl estradiol tab 0.15 mg-30 mcg
ELLA – ulipristal acetate tab 30 mg	Blisovi fe 1/20 – norethindrone ace & ethinyl estradiol-fe tab 1 mg-20 mcg	Estarylla – norgestimate & ethinyl estradiol tab 0.25 mg-35 mcg
Injectable Progestin	Blisovi fe 1.5/30 – norethindrone ace & ethinyl estradiol-fe tab 1.5 mg-30 mcg	ethynodiol diacetate & ethinyl estradiol tab 1 mg-35 mcg, 1 mg-50 mcg
medroxyprogesterone acetate im susp prefilled syr 150 mg/mL (Depo-Provera Contraceptiv)	Blisovi 24 fe – norethindrone ace-ethinyl estradiol-fe tab 1 mg-20 mcg (24)	Falmina – levonorgestrel & ethinyl estradiol tab 0.1 mg-20 mcg
medroxyprogesterone acetate im susp 150 mg/mL (Depo-Provera Contraceptiv)	Briellyn – norethindrone & ethinyl estradiol tab 0.4 mg-35 mcg	Feirza 1/20 – norethindrone ace & ethinyl estradiol-fe tab 1 mg-20 mcg
Oral Combined	Charlotte 24 fe – norethindrone ace/eth estradiol-fe chew tab 1 mg-20 mcg (24)	Feirza 1.5/30 – norethindrone ace & ethinyl estradiol-fe tab 1.5 mg-30 mcg
Afirmelle – levonorgestrel & ethinyl estradiol tab 0.1 mg-20 mcg	Chateal eq – levonorgestrel & ethinyl estradiol tab 0.15 mg-30 mcg	Finzala – norethindrone ace-eth estradiol-fe chew tab 1 mg-20 mcg (24)
Altavera – levonorgestrel & ethinyl estradiol tab 0.15 mg-30 mcg	Cryselles-28 – norgestrel & ethinyl estradiol tab 0.3 mg-30 mcg	Hailey 1.5/30 – norethindrone ace & ethinyl estradiol tab 1.5 mg-30 mcg
Alyacen 1/35 – norethindrone & ethinyl estradiol tab 1 mg-35 mcg		Hailey 24 fe – norethindrone ace-ethinyl estradiol-fe tab 1 mg-20 mcg (24)
Alyacen 7/7/7 – norethindrone-eth estradiol tab 0.5-35/0.75-35/1-35 mg-mcg		
Apri – desogestrel & ethinyl estradiol tab 0.15 mg-30 mcg		
Aranelle – norethindrone-eth estradiol tab 0.5-35/1-35/0.5-35 mg-mcg		

2026 HDHP-HSA Preventive Drug List for The County of Galveston

Hailey fe 1/20 – norethindrone ace & ethinyl estradiol-fe tab 1 mg-20 mcg	Larin 1.5/30 – norethindrone ace & ethinyl estradiol tab 1.5 mg-30 mcg	Low-Ogestrel – norgestrel & ethinyl estradiol tab 0.3 mg-30 mcg
Hailey fe 1.5/30 – norethindrone ace & ethinyl estradiol-fe tab 1.5 mg-30 mcg	Larin fe 1/20 – norethindrone ace & ethinyl estradiol-fe tab 1 mg-20 mcg	Lutera – levonorgestrel & ethinyl estradiol tab 0.1 mg-20 mcg
Isibloom – desogestrel & ethinyl estradiol tab 0.15 mg-30 mcg	Larin fe 1.5/30 – norethindrone ace & ethinyl estradiol-fe tab 1.5 mg-30 mcg	Marlissa – levonorgestrel & ethinyl estradiol tab 0.15 mg-30 mcg
Jasmiel – drospirenone-ethinyl estradiol tab 3-0.02 mg (Yaz)	Larin 24 fe – norethindrone ace-ethinyl estradiol-fe tab 1 mg-20 mcg (24)	Mibelas 24 Fe – norethindrone ace-eth estradiol-fe chew tab 1 mg-20 mcg (24)
Juleber – desogestrel & ethinyl estradiol tab 0.15 mg-30 mcg	Layolis fe – norethindrone & ethinyl estradiol-fe chew tab 0.8 mg-25 mcg	Microgestin 1/20 – norethindrone ace & ethinyl estradiol tab 1 mg-20 mcg
Junel 1/20 – norethindrone ace & ethinyl estradiol tab 1 mg-20 mcg	Leena – norethindrone-eth estradiol tab 0.5-35/1-35/0.5-35 mg-mcg	Microgestin 1.5/30 – norethindrone ace & ethinyl estradiol tab 1.5 mg-30 mcg
Junel 1.5/30 – norethindrone ace & ethinyl estradiol tab 1.5 mg-30 mcg	Lessina – levonorgestrel & ethinyl estradiol tab 0.1 mg-20 mcg	Microgestin fe 1/20 – norethindrone ace & ethinyl estradiol-fe tab 1 mg-20 mcg
Junel fe 1/20 – norethindrone ace & ethinyl estradiol-fe tab 1 mg-20 mcg	Levonest – levonorgestrel-eth estra tab 0.05-30/0.075-40/0.125-30 mg-mcg	Microgestin fe 1.5/30 – norethindrone ace & ethinyl estradiol-fe tab 1.5 mg-30 mcg
Junel fe 1.5/30 – norethindrone ace & ethinyl estradiol-fe tab 1.5 mg-30 mcg	levonorgestrel & ethinyl estradiol tab 0.1 mg-20 mcg, 0.15 mg-30 mcg	Mili – norgestimate & ethinyl estradiol tab 0.25 mg-35 mcg
Junel fe 24 – norethindrone ace-ethinyl estradiol-fe tab 1 mg-20 mcg (24)	levonorgestrel-eth estra tab 0.05-30/0.075-40/0.125-30 mg-mcg	Mono-Linyah – norgestimate & ethinyl estradiol tab 0.25 mg-35 mcg
Kaitlib fe – norethindrone & ethinyl estradiol-fe chew tab 0.8 mg-25 mcg	Levora 0.15/30-28 – levonorgestrel & ethinyl estradiol tab 0.15 mg-30 mcg	Necon 0.5/35-28 – norethindrone & ethinyl estradiol tab 0.5 mg-35 mcg
Kalliga – desogestrel & ethinyl estradiol tab 0.15 mg-30 mcg	Loestrin 1/20-21 – norethindrone ace & ethinyl estradiol tab 1 mg-20 mcg	Nikki – drospirenone-ethinyl estradiol tab 3-0.02 mg (Yaz)
Kariva – desogest-eth estrad & eth estrad tab 0.15-0.02/0.01 mg (21/5)	Loestrin 1.5/30-21 – norethindrone ace & ethinyl estradiol tab 1.5 mg-30 mcg	norethindrone ace & ethinyl estradiol tab 1 mg-20 mcg, 1.5 mg-30 mcg
Kelnor 1/35 – ethynodiol diacetate & ethinyl estradiol tab 1 mg-35 mcg	Loestrin fe 1/20 – norethindrone ace & ethinyl estradiol-fe tab 1 mg-20 mcg	norethindrone ace & ethinyl estradiol-fe tab 1 mg-20 mcg, 1.5 mg-30 mcg
Kelnor 1/50 – ethynodiol diacetate & ethinyl estradiol tab 1 mg-50 mcg	Loestrin fe 1.5/30 – norethindrone ace & ethinyl estradiol-fe tab 1.5 mg-30 mcg	norethindrone ace-eth estradiol-fe chew tab 1 mg-20 mcg (24)
Kurvelo – levonorgestrel & ethinyl estradiol tab 0.15 mg-30 mcg	Lo-Zumandimine – drospirenone-ethinyl estradiol tab 3-0.02 mg (Yaz)	norgestimate & ethinyl estradiol tab 0.25 mg-35 mcg
Larin 1/20 – norethindrone ace & ethinyl estradiol tab 1 mg-20 mcg	Loryna – drospirenone-ethinyl estradiol tab 3-0.02 mg (Yaz)	norgestimate-eth estrad tab 0.18-25/0.215-25/0.25-25 mg-mcg, 0.18-35/0.215-35/0.25-35 mg-mcg
		Nortrel 0.5/35 (28) – norethindrone & ethinyl estradiol tab 0.5 mg-35 mcg

2026 HDHP-HSA Preventive Drug List for The County of Galveston

Nortrel 1/35 – norethindrone & ethinyl estradiol tab 1 mg-35 mcg	Tri-Legest fe – norethindrone ac-ethinyl estrad-fe tab 1-20/1-30/1-35 mg-mcg	Vyfemla – norethindrone & ethinyl estradiol tab 0.4 mg-35 mcg
Nortrel 7/7/7 – norethindrone-eth estradiol tab 0.5-35/0.75-35/1-35 mg-mcg	Tri-Linyah – norgestimate-eth estrad tab 0.18-35/0.215-35/0.25-35 mg-mcg	Vylibra – norgestimate & ethinyl estradiol tab 0.25 mg-35 mcg
Nylia 1/35 – norethindrone & ethinyl estradiol tab 1 mg-35 mcg	Tri-Lo-Estarylla – norgestimate-eth estrad tab 0.18-25/0.215-25/0.25-25 mg-mcg	Wera – norethindrone & ethinyl estradiol tab 0.5 mg-35 mcg
Nylia 7/7/7 – norethindrone-eth estradiol tab 0.5-35/0.75-35/1-35 mg-mcg	Tri-Lo-Marzia – norgestimate-eth estrad tab 0.18-25/0.215-25/0.25-25 mg-mcg	Wymzya fe – norethindrone & ethinyl estradiol-fe chew tab 0.4 mg-35 mcg
Ocella – drospirenone-ethinyl estradiol tab 3-0.03 mg (Yasmin 28)	Tri-Lo-Mili – norgestimate-eth estrad tab 0.18-25/0.215-25/0.25-25 mg-mcg	Xarah Fe – norethindrone ac-ethinyl estrad-fe tab 1-20/1-30/1-35 mg-mcg
Philith – norethindrone & ethinyl estradiol tab 0.4 mg-35 mcg	Tri-Lo-Sprintec – norgestimate-eth estrad tab 0.18-25/0.215-25/0.25-25 mg-mcg	Xelria Fe – norethindrone & ethinyl estradiol-fe chew tab 0.4 mg-35 mcg
Pimtreea – desogest-eth estrad & eth estrad tab 0.15-0.02/0.01 mg (21/5)	Tri-Mili – norgestimate-eth estrad tab 0.18-35/0.215-35/0.25-35 mg-mcg	Zovia 1/35 – ethynodiol diacetate & ethinyl estradiol tab 1 mg-35 mcg
Portia-28 – levonorgestrel & ethinyl estradiol tab 0.15 mg-30 mcg	Tri-Sprintec – norgestimate-eth estrad tab 0.18-35/0.215-35/0.25-35 mg-mcg	Zumandimine – drospirenone-ethinyl estradiol tab 3-0.03 mg (Yasmin 28)
Reclipsen – desogestrel & ethinyl estradiol tab 0.15 mg-30 mcg	Tri-Vylibra – norgestimate-eth estrad tab 0.18-35/0.215-35/0.25-35 mg-mcg	Oral Extended Continuous
Simliya – desogest-eth estrad & eth estrad tab 0.15-0.02/0.01 mg (21/5)	Tri-Vylibra Lo – norgestimate-eth estrad tab 0.18-25/0.215-25/0.25-25 mg-mcg	Amethyst – levonorgestrel-ethinyl estradiol (continuous) tab 90-20 mcg
Sprintec 28 – norgestimate & ethinyl estradiol tab 0.25 mg-35 mcg	Trivora-28 – levonorgestrel-eth estra tab 0.05-30/0.075-40/0.125-30 mg-mcg	Ashlyna – levonorg-eth est tab 0.15-0.03 mg (84) & eth est tab 0.01 mg (7)
Sronyx – levonorgestrel & ethinyl estradiol tab 0.1 mg-20 mcg	Turqoz – norgestrel & ethinyl estradiol tab 0.3 mg-30 mcg	Camrese – levonorg-eth est tab 0.15-0.03 mg (84) & eth est tab 0.01 mg (7)
Syeda – drospirenone-ethinyl estradiol tab 3-0.03 mg (Yasmin 28)	Valtya 1/50 – ethynodiol diacetate & ethinyl estradiol tab 1 mg-50 mcg	Camrese Lo – levonorg-eth est tab 0.1-0.02 mg (84) & eth est tab 0.01 mg (7)
Tarina 24 fe – norethindrone ace-ethinyl estradiol-fe tab 1 mg-20 mcg (24)	Vestura – drospirenone-ethinyl estradiol tab 3-0.02 mg (Yaz)	Daysee – levonorg-eth est tab 0.15-0.03 mg (84) & eth est tab 0.01 mg (7)
Tarina fe 1/20 eq – norethindrone ace & ethinyl estradiol-fe tab 1 mg-20 mcg	Vienva – levonorgestrel & ethinyl estradiol tab 0.1 mg-20 mcg	Dolishale – levonorgestrel-ethinyl estradiol (continuous) tab 90-20 mcg
Tilia fe – norethindrone ac-ethinyl estrad-fe tab 1-20/1-30/1-35 mg-mcg	Viorele – desogest-eth estrad & eth estrad tab 0.15-0.02/0.01 mg (21/5)	Iclevia – levonorgestrel & ethinyl estradiol (91-day) tab 0.15-0.03 mg
Tri-Estarylla – norgestimate-eth estrad tab 0.18-35/0.215-35/0.25-35 mg-mcg	Volnea – desogest-eth estrad & eth estrad tab 0.15-0.02/0.01 mg (21/5)	Introvale – levonorgestrel & ethinyl estradiol (91-day) tab 0.15-0.03mg

2026 HDHP-HSA Preventive Drug List for The County of Galveston

Jaimiess – levonorg-eth est tab
0.15-0.03 mg (84) & eth est tab
0.01 mg (7)

Jolessa – levonorgestrel & ethinyl
estradiol (91-day) tab
0.15-0.03 mg

levonor-eth est tab 0.15-
0.02/0.025/0.03 mg & eth est
0.01 mg

levonorg-eth est tab 0.1-0.02 mg
(84) & eth est tab 0.01 mg (7)

levonorgestrel & ethinyl estradiol
(91-day) tab 0.15-0.03 mg

levonorgestrel-ethinyl estradiol
(continuous) tab 90-20 mcg

Lojaimiess – levonorg-eth est tab
0.1-0.02 mg (84) & eth est tab
0.01 mg (7)

Rivelsa – levonor-eth est tab
0.15-0.02/0.025/0.03 mg & eth
est 0.01 mg

Setlakin – levonorgestrel & ethinyl
estradiol (91-day) tab
0.15-0.03 mg

Simpesse – levonorg-eth est tab
0.15-0.03 mg (84) & eth est tab
0.01 mg (7)

Oral Progestin

Camila – norethindrone tab
0.35 mg

Deblitane – norethindrone tab
0.35 mg

Emzahn – norethindrone tab
0.35 mg

Errin – norethindrone tab
0.35 mg

Heather – norethindrone tab
0.35 mg

Incassia – norethindrone tab
0.35 mg

Jencycla – norethindrone tab
0.35 mg

Lyleq – norethindrone tab
0.35 mg

Lyza – norethindrone tab
0.35 mg

Nora-Be – norethindrone tab
0.35 mg

norethindrone tab 0.35 mg
Norlyroc – norethindrone tab
0.35 mg

OPILL – norgestrel tab 0.075 mg
Sharobel – norethindrone tab
0.35 mg

Transdermal Combined

norelgestromin-ethinyl estradiol
td ptwk 150-35 mcg/24hr

Xulane – norelgestromin-ethinyl
estradiol td ptwk
150-35 mcg/24hr

Zafemy – norelgestromin-ethinyl
estradiol td ptwk
150-35 mcg/24hr

Vaginal Combined

NUVARING – etonogestrel-ethinyl
estradiol va ring
0.120-0.015 mg/24hr

Depression

Selective Serotonin Reuptake Inhibitors (SSRIs)

citalopram hydrobromide oral
soln 10 mg/5 mL

citalopram hydrobromide tab
10 mg, 20 mg, 40 mg
(base equivalent) (Celexa)

escitalopram oxalate soln
5 mg/5 mL (base equivalent)

escitalopram oxalate tab 5 mg,
10 mg, 20 mg (base equivalent)
(Lexapro)

fluoxetine hcl cap 10 mg, 20 mg,
40 mg (Prozac)

fluoxetine hcl solution
20 mg/5 mL

fluoxetine hcl tab 10 mg, 20 mg
paroxetine hcl tab 10 mg, 20 mg,
30 mg, 40 mg (Paxil)

sertraline hcl oral concentrate for
solution 20 mg/mL (Zoloft)

sertraline hcl tab 25 mg, 50 mg,
100 mg (Zoloft)

Diabetes Medications

Oral Only

acarbose tab 25 mg, 50 mg,
100 mg

FARXIGA – dapagliflozin
propanediol tab 5 mg, 10 mg
(base equivalent)

glimepiride tab 1 mg, 2 mg, 4 mg

glipizide tab 5 mg, 10 mg

glipizide tab er 24hr 2.5 mg

glipizide tab er 24hr 5 mg, 10 mg
(Glucotrol xl)

glipizide-metformin hcl tab
2.5-250 mg, 2.5-500 mg,
5-500 mg

GLYXAMBI – empagliflozin-linagliptin
tab 10-5 mg, 25-5 mg

glyburide tab 1.25 mg, 2.5 mg,
5 mg

glyburide-metformin tab
1.25-250 mg, 2.5-500 mg,
5-500 mg

JANUMET – sitagliptin-phosphate-
metformin hcl tab 50-500 mg,
50-1000 mg

JANUMET XR – sitagliptin phosphate-
metformin hcl tab er 24hr
50-500 mg, 50-1000 mg,
100-1000 mg

JANUVIA – sitagliptin phosphate tab
25 mg, 50 mg, 100 mg
(base equivalent)

JARDIANCE – empagliflozin tab
10 mg, 25 mg

metformin hcl tab 500 mg,
850 mg, 1000 mg

metformin hcl tab er 24hr
500 mg, 750 mg

nateglinide tab 60 mg, 120 mg

pioglitazone hcl tab 15 mg, 30 mg,
45 mg (base equivalent) (Actos)

pioglitazone hcl-metformin hcl tab
15-500 mg

pioglitazone hcl-metformin hcl tab
15-850 mg (Actoplus met)

repaglinide tab 0.5 mg, 1 mg, 2 mg

2026 HDHP-HSA Preventive Drug List for The County of Galveston

SYNJARDY – empagliflozin-metformin hcl tab 5-500 mg, 5-1000 mg, 12.5-500 mg, 12.5-1000 mg

SYNJARDY XR – empagliflozin-metformin hcl tab er 24hr 5-1000 mg, 10-1000 mg, 12.5-1000 mg, 25-1000 mg

TRIJARDY XR – empagliflozin-linagliptin-metformin tab er 24hr 5-2.5-1000 mg, 10-5-1000 mg, 12.5-2.5-1000 mg, 25-5-1000 mg

XIGDUO XR – dapagliflozin propmetformin hcl tab er 24hr 5-500 mg, 10-500 mg, 2.5-1000 mg, 5-1000 mg, 10-1000 mg

Diabetic Supplies

Calibration Liquids

ABBOTT FREESTYLE
ABBOTT MEDISENSE,
HIGH/MID/LOW
ABBOTT PRECISION
ASCENSIA CONTOUR
ASCENSIA CONTOUR NEXT

Insulin Syringes

Lancets

Lancet Devices

Pen Needles

Test Strips & Discs

ABBOTT FREESTYLE, INSULINX,
LITE, PRECISION NEO
ABBOTT PRECISION SOF-TACT
ABBOTT OPTIUMEZ
ASCENSIA CONTOUR
ASCENSIA CONTOUR NEXT

Estrogen

CLIMARA PRO – estradiol-levonorgestrel td patch weekly 0.045-0.015 mg/day

DUAVEE – conjugated estrogens-bazedoxifene tab 0.45-20 mg

estradiol & norethindrone acetate tab 0.5-0.1 mg, 1-0.5 mg tab (Activella)

estradiol gel 0.06% (0.75 mg/1.25 gm metered-dose pump) (Estrogel)

estradiol tab 0.5 mg, 1 mg, 2 mg (Estrace)

estradiol td gel 0.25 mg/0.25 gm, 0.5 mg/0.5 gm, 0.75 mg/0.75 gm, 1 mg/gm, 1.25 mg/1.25 gm (0.1%) (Divigel)

estradiol td patch twice weekly 0.025 mg/24hr, 0.0375 mg/24hr, 0.05 mg/24hr, 0.075 mg/24hr, 0.1 mg/24hr (Vivelle-Dot, Minivelle)

estradiol td patch weekly 0.025 mg/24hr, 0.0375 mg/24hr (37.5 mcg/24hr), 0.05 mg/24hr, 0.06 mg/24hr, 0.075 mg/24hr, 0.1 mg/24hr (Climara)

estradiol vaginal cream 0.1 mg/gm (Estrace)

estradiol vaginal tab 10 mcg (Vagifem)

estradiol valerate IM in oil 10 mg/mL, 20 mg/mL, 40 mg/mL (Delestrogen)

ESTRING – estradiol vaginal ring 2 mg (7.5 mcg/24hrs)

norethindrone acetate-ethinyl estradiol tab 0.5 mg-2.5 mcg, 1 mg-5 mcg

PREMARIN – estrogens, conjugated tab 0.3 mg, 0.45 mg, 0.625 mg, 0.9 mg, 1.25 mg

PREMPHASE – conj est 0.625 (14)/conj est-medroxypro ac tab 0.625-5 mg (14)

PREMPRO – conjugated estrogen-medroxyprogesterone acetate tab 0.3-1.5 mg, 0.45-1.5 mg, 0.625-2.5 mg, 0.625-5 mg

Gastrointestinal Ulcer

esomeprazole magnesium for delayed release susp packet 2.5 mg, 5 mg, 10 mg, 20 mg, 40 mg (Nexium)

famotidine for susp 40 mg/5 mL
famotidine tab 40 mg (Pepcid)
misoprostol tab 100 mcg, 200 mcg (Cytotec)

omeprazole cap delayed release 10 mg, 20 mg, 40 mg

pantoprazole sodium ec tab 20 mg, 40 mg (base equivalent) (Protonix)

sucralfate tab 1 gm (Carafate)

Gout

allopurinol tab 100 mg, 300 mg

High Blood Pressure

acebutolol hcl cap 200 mg, 400 mg

amiloride hcl tab 5 mg

amlodipine besylate tab 2.5 mg, 5 mg, 10 mg (base equivalent) (Norvasc)

amlodipine besylate-benazepril hcl cap 2.5-10 mg, 5-40 mg

amlodipine besylate-benazepril hcl cap 5-10 mg, 5-20 mg, 10-20 mg, 10-40 mg (Lotrel)

amlodipine besylate-olmesartan medoxomil tab 5-20 mg, 5-40 mg, 10-20 mg, 10-40 mg (Azor)

amlodipine besylate-valsartan tab 5-160 mg, 5-320 mg, 10-160 mg, 10-320 mg (Exforge)

amlodipine-valsartan-hydrochlorothiazide tab 5-160-12.5 mg, 5-160-25 mg, 10-160-12.5 mg, 10-160-25 mg, 10-320-25 (Exforge hct)

atenolol tab 25 mg, 50 mg, 100 mg (Tenormin)

atenolol & chlorthalidone tab 50-25 mg, (Tenoretic 50) 100-25 mg (Tenoretic 100)

benazepril hcl tab 5 mg

benazepril hcl tab 10 mg, 20 mg, 40 mg (Lotensin)


2026 HDHP-HSA Preventive Drug List for The County of Galveston



benazepril & hydrochlorothiazide tab 5-6.25 mg	enalapril maleate tab 2.5 mg, 5 mg, 10 mg, 20 mg (Vasotec)	losartan potassium & hydrochlorothiazide tab 50-12.5 mg, 100-12.5 mg, 100-25 mg (Hyzaar)
benazepril & hydrochlorothiazide tab 10-12.5 mg, 20-12.5 mg, 20-25 mg (Lotensin hct)	enalapril maleate & hydrochlorothiazide tab 5-12.5 mg	metolazone tab 2.5 mg, 5 mg, 10 mg
betaxolol hcl tab 10 mg, 20 mg	enalapril maleate & hydrochlorothiazide tab 10-25 mg (Vaseretic)	metoprolol succinate tab er 24hr 25 mg, 50 mg, 100 mg, 200 mg (tartrate equivalent) (Toprol xl)
bisoprolol & hydrochlorothiazide tab 2.5-6.25 mg, 5-6.25 mg, 10-6.25 mg	enalapril maleate oral soln 1 mg/mL (Epaned)	metoprolol tartrate tab 25 mg, 37.5 mg, 75 mg
bisoprolol fumarate tab 5 mg, 10 mg	eplerenone tab 25 mg, 50 mg (Inspra)	metoprolol tartrate tab 50 mg, 100 mg (Lopressor)
bumetanide tab 0.5 mg (Bumex)	felodipine tab er 24hr 2.5 mg, 5 mg, 10 mg	metoprolol & hydrochlorothiazide tab 50-25 mg, 100-25 mg, 100-50 mg
bumetanide tab 1 mg, 2 mg	fosinopril sodium tab 10 mg, 20 mg, 40 mg	minoxidil tab 2.5 mg, 10 mg
candesartan cilexetil tab 4 mg, 8 mg, 16 mg, 32 mg (Atacand)	fosinopril sodium & hydrochlorothiazide tab 10-12.5 mg, 20-12.5 mg	moexipril hcl tab 7.5 mg, 15 mg
candesartan cilexetil-hydrochlorothiazide tab 16-12.5 mg, 32-12.5 mg, 32-25 mg (Atacand hct)	furosemide oral soln 10 mg/mL	nadolol tab 20 mg, 40 mg, 80 mg
captopril tab 12.5 mg, 25 mg, 50 mg, 100 mg	furosemide tab 20 mg, 40 mg, 80 mg (Lasix)	nebivolol hcl tab 2.5 mg, 5 mg, 10 mg, 20 mg (base equivalent) (Bystolic)
carvedilol tab 3.125 mg, 6.25 mg, 12.5 mg, 25 mg (Coreg)	guanfacine hcl tab 1 mg, 2 mg	nifedipine cap 10 mg, 20 mg
chlorthalidone tab 25 mg, 50 mg	hydralazine hcl tab 10 mg, 25 mg, 50 mg, 100 mg	nifedipine tab er 24hr 30 mg, 60 mg, 90 mg
clonidine hcl tab 0.1 mg, 0.2 mg, 0.3 mg	hydrochlorothiazide cap 12.5 mg	nifedipine tab er 24hr osmotic release 30 mg, 60 mg, 90 mg (Procardia xl)
clonidine td patch weekly 0.1 mg/24hr (Catapres-TTS-1), 0.2 mg/24hr (Catapres-TTS-2), 0.3 mg/24hr (Catapres-TTS-3)	hydrochlorothiazide tab 12.5 mg, 25 mg, 50 mg	olmesartan medoxomil tab 5 mg, 20 mg, 40 mg (Benicar)
diltiazem hcl cap er 12hr 60 mg, 90 mg, 120 mg	indapamide tab 1.25 mg, 2.5 mg	olmesartan medoxomil-hydrochlorothiazide tab 20-12.5 mg, 40-12.5 mg, 40-25 mg (Benicar hct)
diltiazem hcl cap er 24hr 120 mg, 180 mg, 240 mg	irbesartan tab 75 mg	olmesartan-amlodipine-hydrochlorothiazide tab 20-5-12.5 mg, 40-5-12.5 mg, 40-5-25 mg, 40-10-12.5 mg, 40-10-25 mg (Tribenzor)
diltiazem hcl coated beads cap er 24hr 120 mg, 180 mg, 240 mg, 300 mg (Cardizem cd)	irbesartan tab 150 mg, 300 mg (Avapro)	perindopril erbumine 4 mg
diltiazem hcl extended release beads cap er 24hr 120 mg, 180 mg, 240 mg, 300 mg (Tiazac)	irbesartan-hydrochlorothiazide tab 150-12.5 mg, 300-12.5 mg (Avalide)	phenoxybenzamine hcl cap 10 mg (Dibenzylina)
diltiazem hcl tab 30 mg, 60 mg, 120 mg (Cardizem)	isosorbide dinitrate-hydralazine hcl tab 20-37.5 mg (Bidil)	pindolol tab 5 mg, 10 mg
diltiazem hcl tab 90 mg	labetalol hcl tab 100 mg, 200 mg, 300 mg	prazosin hcl cap 1 mg, 2 mg, 5 mg
diltiazem hcl tab er 24hr 120 mg (Cardizem la)	lisinopril tab 2.5 mg, 5 mg, 10 mg, 20 mg, 30 mg, 40 mg (Zestril)	propranolol hcl cap er 24hr 60 mg, 80 mg, 120 mg, 160 mg (Inderal la)
doxazosin mesylate tab 1 mg, 2 mg, 4 mg, 8 mg (Cardura)	lisinopril & hydrochlorothiazide tab 10-12.5 mg, 20-12.5 mg, 20-25 mg (Zestoretic)	
	losartan potassium tab 25 mg, 50 mg, 100 mg (Cozaar)	

2026 HDHP-HSA Preventive Drug List for The County of Galveston

propranolol hcl tab 10 mg, 20 mg, 40 mg, 60 mg, 80 mg
quinapril hcl tab 5 mg, 10 mg, 20 mg, 40 mg (Accupril)
quinapril-hydrochlorothiazide tab 10-12.5 mg, 20-12.5 mg (Accuretic)
ramipril cap 1.25 mg, 5 mg
ramipril cap 2.5 mg, 10 mg (Altace)
spironolactone tab 25 mg, 50 mg, 100 mg (Aldactone)
spironolactone & hydrochlorothiazide tab 25-25 mg
telmisartan tab 20 mg
telmisartan tab 40 mg, 80 mg (Micardis)
terazosin hcl cap 1 mg, 2 mg, 5 mg, 10 mg (base equivalent)
torsemide tab 5 mg, 10 mg, 20 mg, 100 mg
trandolapril tab 1 mg, 2 mg, 4 mg
triamterene cap 50 mg, 100 mg (Dyrenium)
triamterene & hydrochlorothiazide cap 37.5-25 mg
triamterene & hydrochlorothiazide tab 37.5-25 mg, 75-50 mg
valsartan tab 40 mg, 80 mg, 160 mg, 320 mg (Diovan)
valsartan-hydrochlorothiazide tab 80-12.5 mg, 160-12.5 mg, 160-25 mg, 320-12.5 mg, 320-25 mg (Diovan hct)
verapamil hcl cap er 24hr 120 mg, 180 mg, 240 mg (Verelan)
verapamil hcl tab 40 mg, 80 mg, 120 mg
verapamil hcl tab er 120 mg, 180 mg, 240 mg

High Cholesterol Orals

atorvastatin calcium tab 10 mg, 20 mg, 40 mg, 80 mg (base equivalent) (Lipitor) 
cholestyramine light powder 4 gm/dose (Questran Light)

cholestyramine powder 4 gm/dose (Questran)
colesevelam hcl tab 625 mg (Welchol)
colestipol hcl granule packets 5 gm
colestipol hcl granules 5 gm (Colestid)
colestipol hcl tab 1 gm (Colestid)
ezetimibe tab 10 mg (Zetia)
ezetimibe-simvastatin tab 10-10 mg, 10-20 mg, 10-40 mg, 10-80 mg (Vytorin)
fenofibrate tab 48 mg, 145 mg (Tricor)
fenofibrate tab 54 mg, 160 mg
fenofibrate micronized cap 67 mg, 134 mg, 200 mg
gemfibrozil tab 600 mg (Lopid)
icosapent ethyl cap 0.5 gm, 1 gm (Vascepa)
lovastatin tab 10 mg
lovastatin tab 20 mg, 40 mg 
niacin tab er 500 mg, 750 mg, 1000 mg (antihyperlipidemic)
pravastatin sodium tab 10 mg, 20 mg, 40 mg, 80 mg 
rosuvastatin calcium tab 5 mg, 10 mg, 20 mg, 40 mg (Crestor)
simvastatin tab 10 mg, 20 mg, 40 mg (Zocor)
simvastatin tab 5 mg, 80 mg

Influenza Agents


oseltamivir phosphate cap 30 mg, 45 mg, 75 mg (base equiv) (Tamiflu)
oseltamivir phosphate for susp 6 mg/mL (base equiv) (Tamiflu)

Mental Health

bupropion hcl tab 75 mg, 100 mg
bupropion hcl tab er 12hr 100 mg, 150 mg, 200 mg (Wellbutrin SR)
bupropion hcl tab er 24hr 150 mg, 300 mg (Wellbutrin XL)

desvenlafaxine succinate tab er 24hr 25 mg, 50 mg, 100 mg (base equiv) (Pristiq)
duloxetine hcl enteric coated pellets cap 20 mg, 30 mg, 60 mg (base eq) (Cymbalta)
fluvoxamine maleate tab 25 mg, 50 mg, 100 mg
mirtazapine orally disintegrating tab 15 mg, 30 mg, 45 mg (Remeron Soltab)
mirtazapine tab 7.5 mg, 45 mg
mirtazapine tab 15 mg, 30 mg (Remeron)
trazodone hcl tab 50 mg, 100 mg, 150 mg
venlafaxine hcl cap er 24hr 75 mg (base equivalent) (Effexor XR)
venlafaxine hcl cap sr 24hr 37.5 mg, 150 mg (base equivalent) (Effexor XR)
venlafaxine hcl tab 25 mg, 37.5 mg, 50 mg, 75 mg, 100 mg (base equivalent)
vilazodone hcl tab 10 mg, 20 mg, 40 mg (Viibryd)

Osteoporosis

alendronate sodium tab 10 mg, 35 mg
alendronate sodium tab 70 mg (Fosamax)
calcitonin (salmon) nasal soln 200 unit/act
ibandronate sodium tab 150 mg (base equivalent)
raloxifene hcl tab 60 mg (Evista) 
risedronate sodium tab 30 mg
risedronate sodium tab 35 mg, 150 mg (Actonel)

Respiratory

acetylcysteine inhal soln 10%, 20% ADVAIR HFA – fluticasone-salmeterol inhal aerosol 45-21 mcg/act, 115-21 mcg/act, 230-21 mcg/act

2026 HDHP-HSA Preventive Drug List for The County of Galveston

AIRSUPRA – albuterol-budesonide inhalation aerosol 90-80 mcg/act

albuterol sulfate inhal aero 108 mcg/act

(90 mcg base equivalent)

albuterol sulfate soln nebu 0.083% (2.5 mg/3 mL), 0.5% (5 mg/mL)

albuterol sulfate soln nebu 0.63 mg/3 mL, 1.25 mg/3 mL (base equivalent)

albuterol sulfate syrup 2 mg/5 mL

albuterol sulfate tab 2 mg, 4 mg

ANORO ELLIPTA – umeclidinium-vilanterol aero powd ba 62.5-25 mcg/act

arformoterol tartrate soln nebu 15 mcg/2 mL (base equivalent) (Brovana)

ARNUITY ELLIPTA – fluticasone furoate aerosol powder breath activ 50 mcg/act, 100 mcg/act, 200 mcg/act

ASMANEX HFA – mometasone furoate inhal aerosol suspension 50 mcg/act, 100 mcg/act, 200 mcg/act

ASMANEX TWISTHALER 30 METERED – mometasone furoate inhal powd 110 mcg/act (breath activated)

ASMANEX TWISTHALER 30, 60, 120 METERED – mometasone furoate inhal powd 220 mcg/act (breath activated)

BREO ELLIPTA – fluticasone furoate vilanterol aero powd ba 50-25 mcg/act, 100-25 mcg/act, 200-25 mcg/act

BREZTRI AEROSPHERE – budesonide-glycopyrrolate-formoterol aers 160-9-4.8 mcg/act

budesonide-formoterol fumarate dihyd aerosol 80-4.5 mcg/act, 160-4.5 mcg/act (Symbicort)

budesonide inhalation susp 0.25 mg/2 mL, 0.5 mg/2 mL, 1 mg/2 mL (Pulmicort)

COMBIVENT RESPIMAT – ipratropium-albuterol inhal aerosol soln 20-100 mcg/act

cromolyn sodium soln nebu 20 mg/2 mL

DULERA – mometasone furoate-formoterol fumarate aerosol 50-5 mcg/act, 100-5 mcg/act, 200-5 mcg/act

FLUTICASONE PROPIONATE/SA – futicasone-salmeterol aer powder ba 55-14 mcg/act, 113-14 mcg/act, 232-14 mcg/act

fluticasone-salmeterol aer powder ba 100-50 mcg/act, 250-50 mcg/act, 500-50 mcg/act (Advair Diskus)

INCRUSE ELLIPTA – umeclidinium br aero powd breath act 62.5 mcg/act (base equivalent)

ipratropium bromide inhal soln 0.02%

ipratropium-albuterol nebu soln 0.5-2.5(3) mg/3 mL

levalbuterol hcl soln nebu 0.31 mg/3 mL, 0.63 mg/3 mL, 1.25 mg/3 mL (base equivalent)

levalbuterol hcl soln nebu conc 1.25 mg/0.5 mL (base equivalent)

montelukast sodium chew tab 4 mg, 5 mg (base equivalent) (Singulair)

montelukast sodium tab 10 mg (base equivalent) (Singulair)

QVAR REDHALER – beclomethasone diprop hfa breath act inh aer 40 mcg/act, 80 mcg/act

roflumilast tab 250 mcg, 500 mcg (Daliresp)

SEREVENT DISKUS – salmeterol xinafoate aer pow ba 50 mcg/act (base equivalent)

SPIRIVA RESPIMAT – tiotropium bromide monohydrate inhal aerosol 1.25 mcg/act, 2.5 mcg/act

STIOLTO RESPIMAT – tiotropium br-olodaterol inhal aero soln 2.5-2.5 mcg/act

STRIVERDI RESPIMAT – olodaterol hcl inhal aerosol soln 2.5 mcg/act (base equivalent)

SYMBICORT – budesonide-formoterol fumarate dihyd aerosol 80-4.5 mcg/act, 160-4.5 mcg/act

terbutaline sulfate tab 2.5 mg, 5 mg

theophylline elixir 80 mg/15 mL

theophylline soln 80 mg/15 mL

theophylline tab er 12hr 300 mg, 450 mg

theophylline tab er 24hr 400 mg, 600 mg

TRELEGY ELLIPTA – fluticasone umeclidinium- vilanterol aebp 100-62.5-25 mcg/act, 200-62.5-25 mcg/act

VENTOLIN HFA – albuterol sulfate inhal aero 108 mcg/act (90 mcg base equivalent)

zafirlukast tab 10 mg, 20 mg (Accolate)

Thyroid Agents

levothyroxine sodium tab 25 mcg, 50 mcg, 75 mcg, 88 mcg, 100 mcg, 112 mcg, 125 mcg, 137 mcg, 150 mcg, 175 mcg, 200 mcg, 300 mcg (Synthroid)

liothyronine sodium tab 5 mcg, 25 mcg, 50 mcg (Cytomel)

methimazole tab 5 mg, 10 mg

propylthiouracil tab 50 mg

SYNTHROID – levothyroxine sodium tab 25 mcg, 50 mcg, 75 mcg, 88 mcg, 100 mcg, 112 mcg, 125 mcg, 137 mcg, 150 mcg, 175 mcg, 200 mcg, 300 mcg